

# Santa Satchel

A scrappy fashionable bag

**TUESDAYS**  
WITH GRACE



# Fabric & Supplies

Jelly roll or assorted colors for strips

½ yard cotton fabric bag lining

1-Fat quarter for side pockets

½ yard of batting

½ yard Fusible interfacing



[https://www.joann.com/fusible-interfacing-15in-x-3-yards/1778810.html?gad\\_source=1&gclid=CjwKCAiApaarBhB7EiwAYiMwgs5vUtA-pUbOUKcL0lp19RRnu8GLzqM7TSi9RpaUKYgFeRzpgUvkTRoCXUMQAvD\\_BwE](https://www.joann.com/fusible-interfacing-15in-x-3-yards/1778810.html?gad_source=1&gclid=CjwKCAiApaarBhB7EiwAYiMwgs5vUtA-pUbOUKcL0lp19RRnu8GLzqM7TSi9RpaUKYgFeRzpgUvkTRoCXUMQAvD_BwE)

9" Zipper color your choice

2- Lobster clasp (optional)



2-D rings for purses (optional)



Cut 2- Batting pieces 15" wide X 13" tall

Cut 2- Lining pieces 15" X 13"

Cut 2- pockets 10.5" X 5.5"

Cut 2- fusible interfacing pieces 15" X 13"

Cut 4- Handle straps 2.5" X WOF (Width of Fabric)

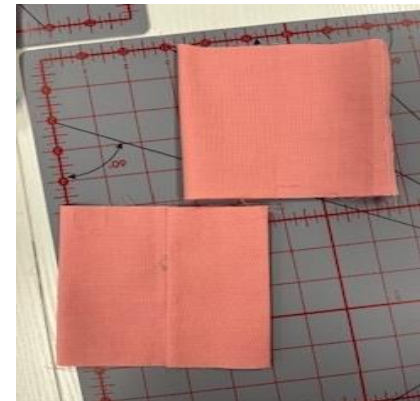
If you are not using jelly rolls, cut fabric strips from assorted colors.

8- strips of four colors 2.5" X 18"

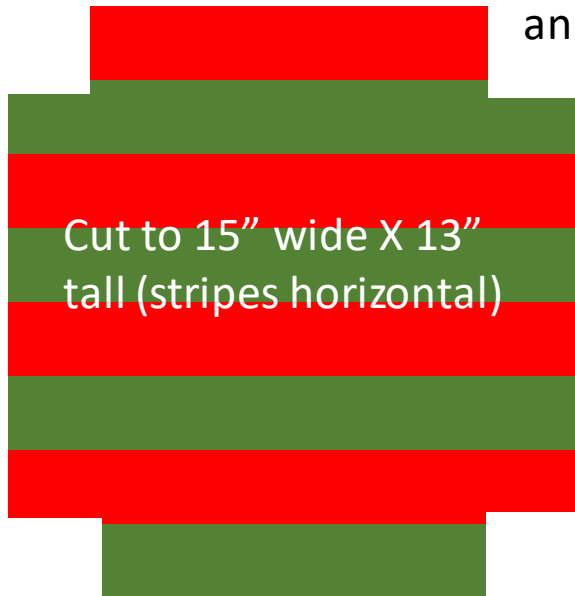
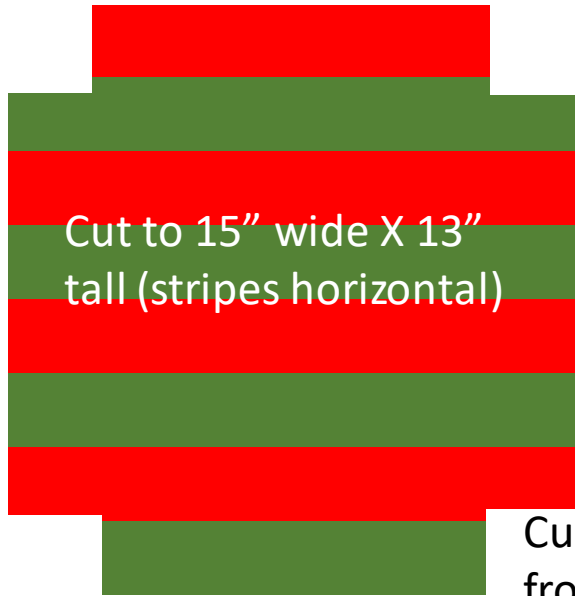
2- strips 2.5" X 50" for long handle strap (optional)

Sew your handle straps together, turn the right side out, and iron it flat. (watch the creases so they don't fold over.)

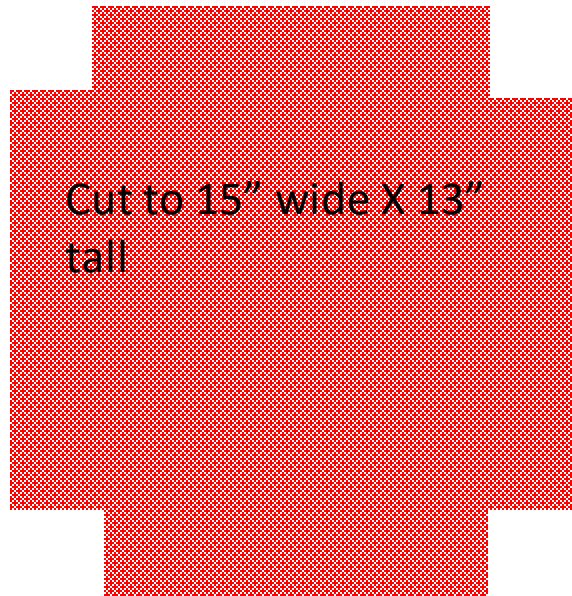
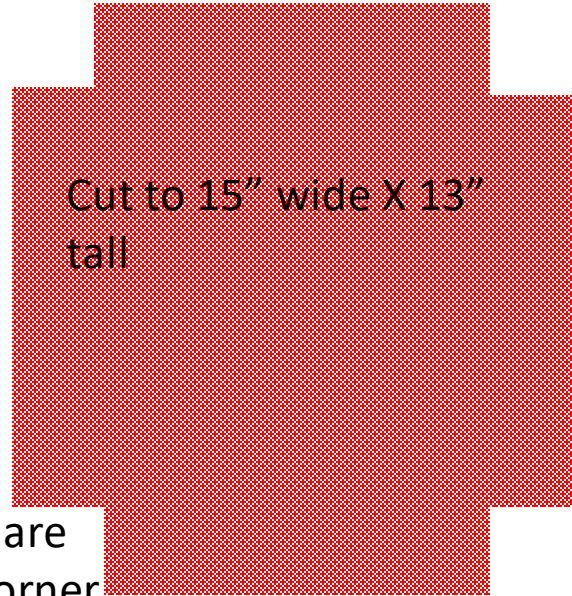
Sew your pocket: fold the pocket in half and sew across then turn so your seam is on the inside as shown in the picture.



Outer Bag

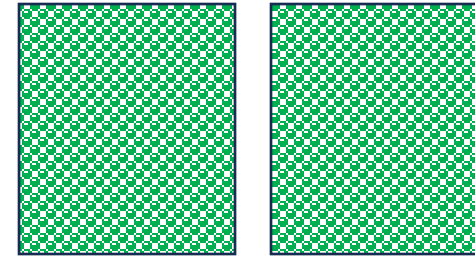


Lining



Cut 2.5" square from each corner of the outer bag and lining.

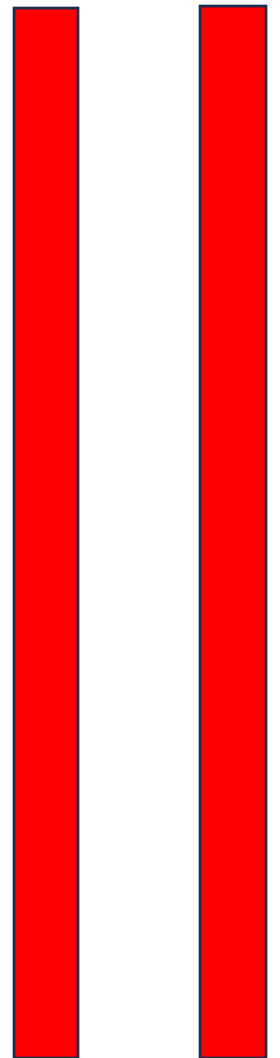
Pockets



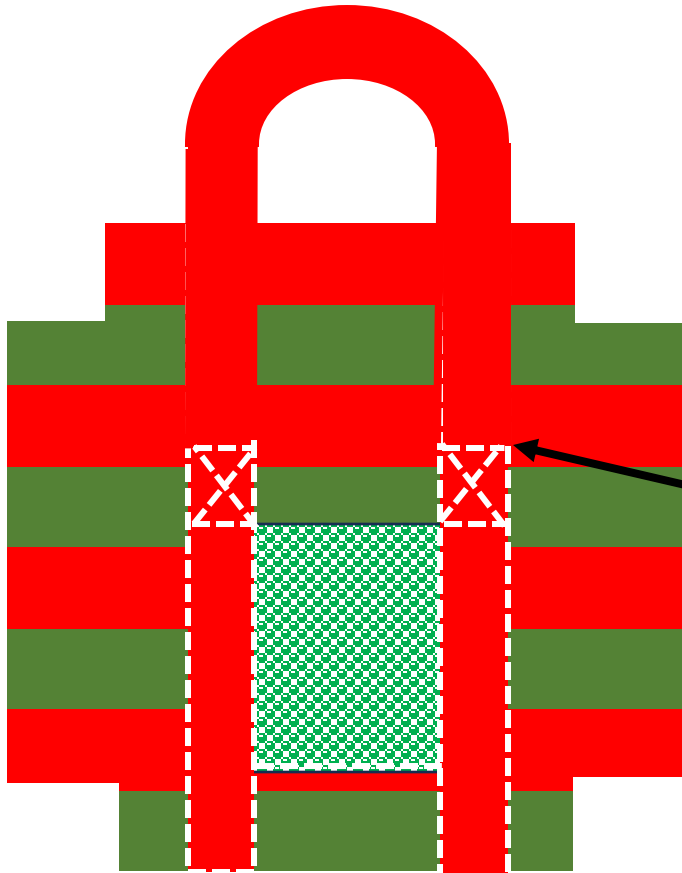
Cut 2.5" square from each corner of the outer bag and lining.



Handles



Sew handles and pockets to the outer bag.

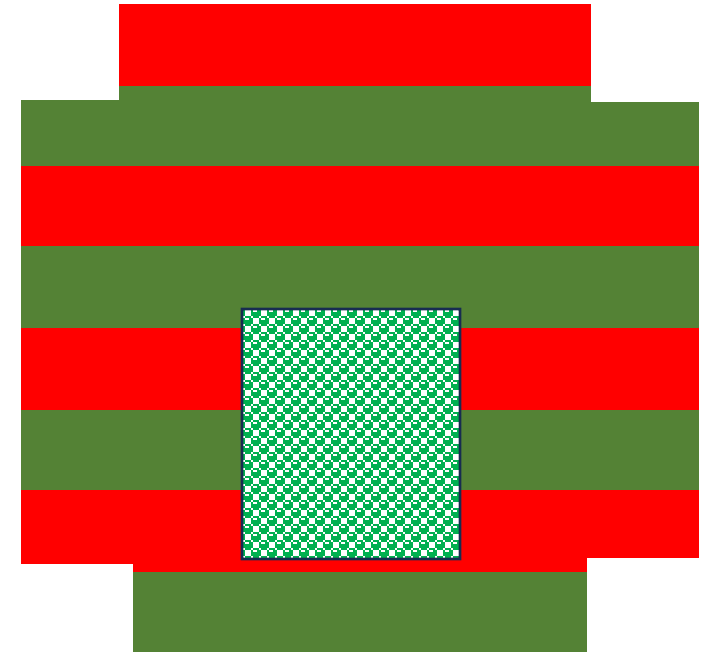


Center pocket onto the outer bag and pin.

Measure  $\frac{1}{4}$ " on the left and right sides of the pocket.

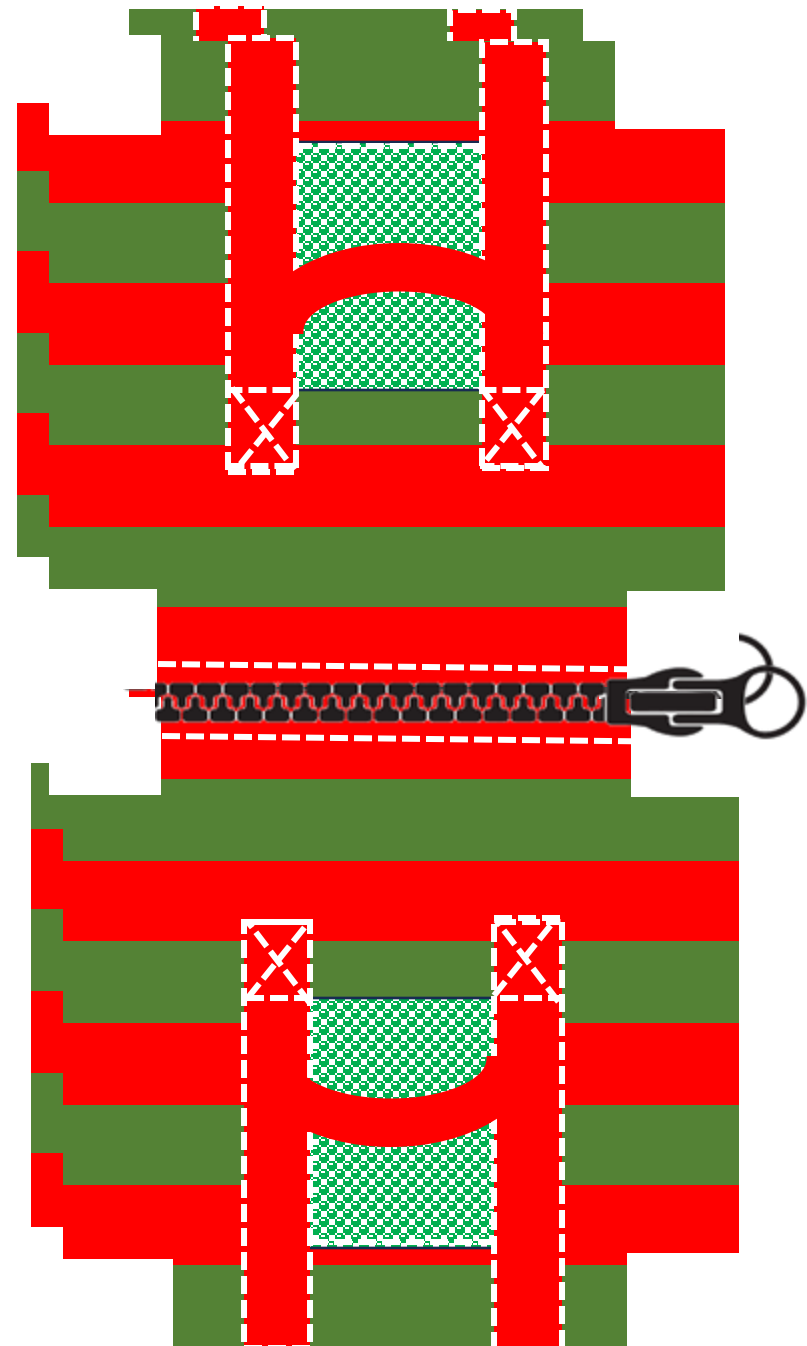
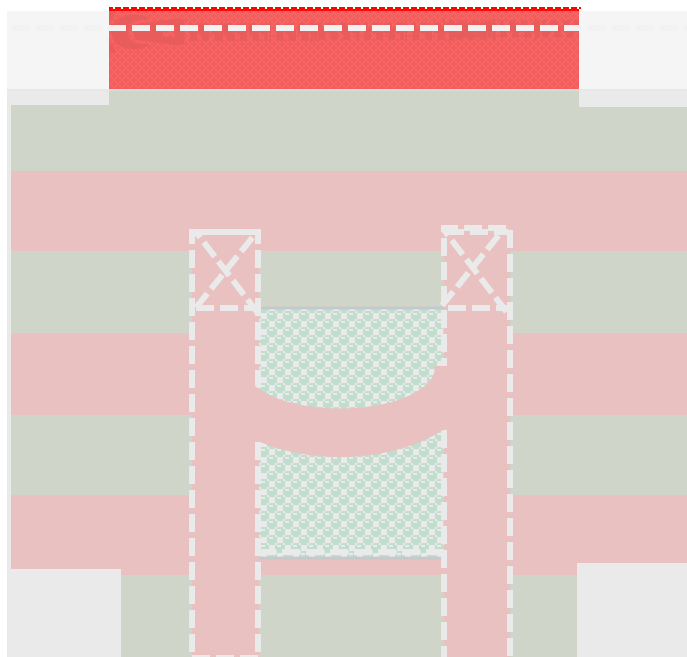
Pin the handle onto the pocket using the  $\frac{1}{4}$  as your pinning line.

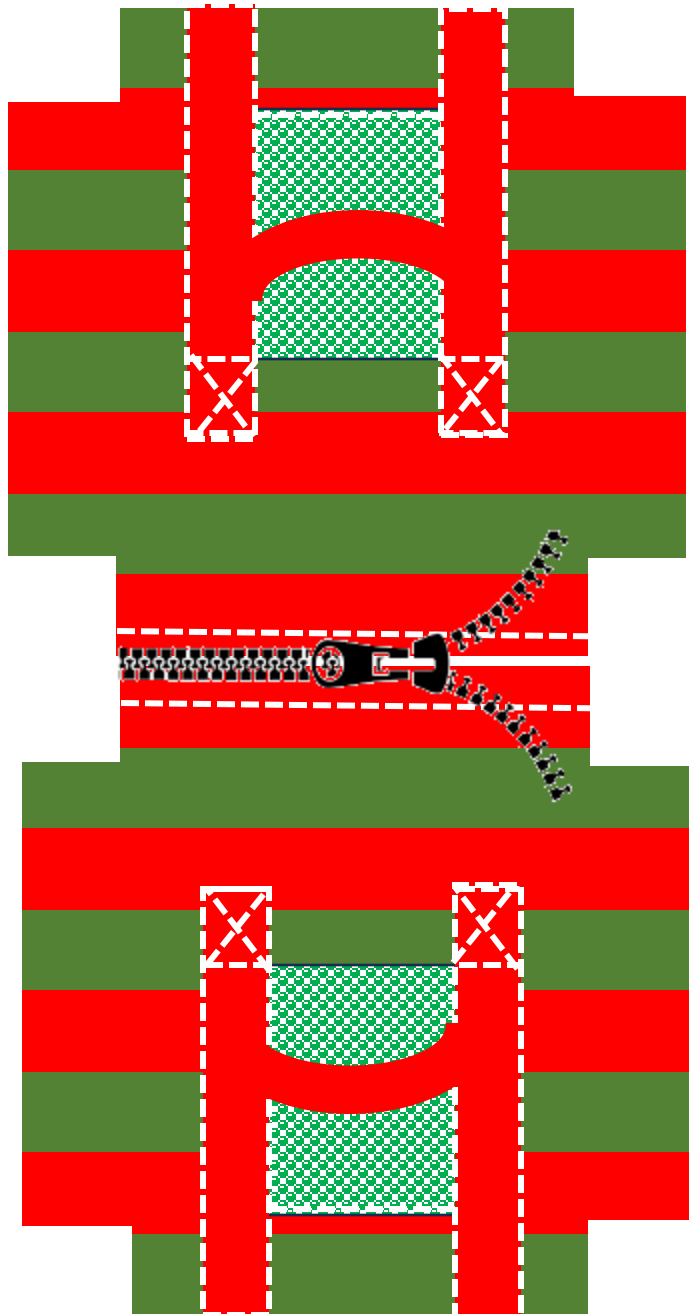
Measure  $1\frac{1}{2}$  inches above the top edge of the pocket and mark. This mark you won't sew past and make your X to secure the handles.



Lay lining right side up  
Lay the zipper right side up on top of the lining.  
Pin together  
Lay the outer bag on the wrong side up and pin it to the top edge of the lining and zipper. Then sew them together using the zipper foot.

Do the same for the other side.

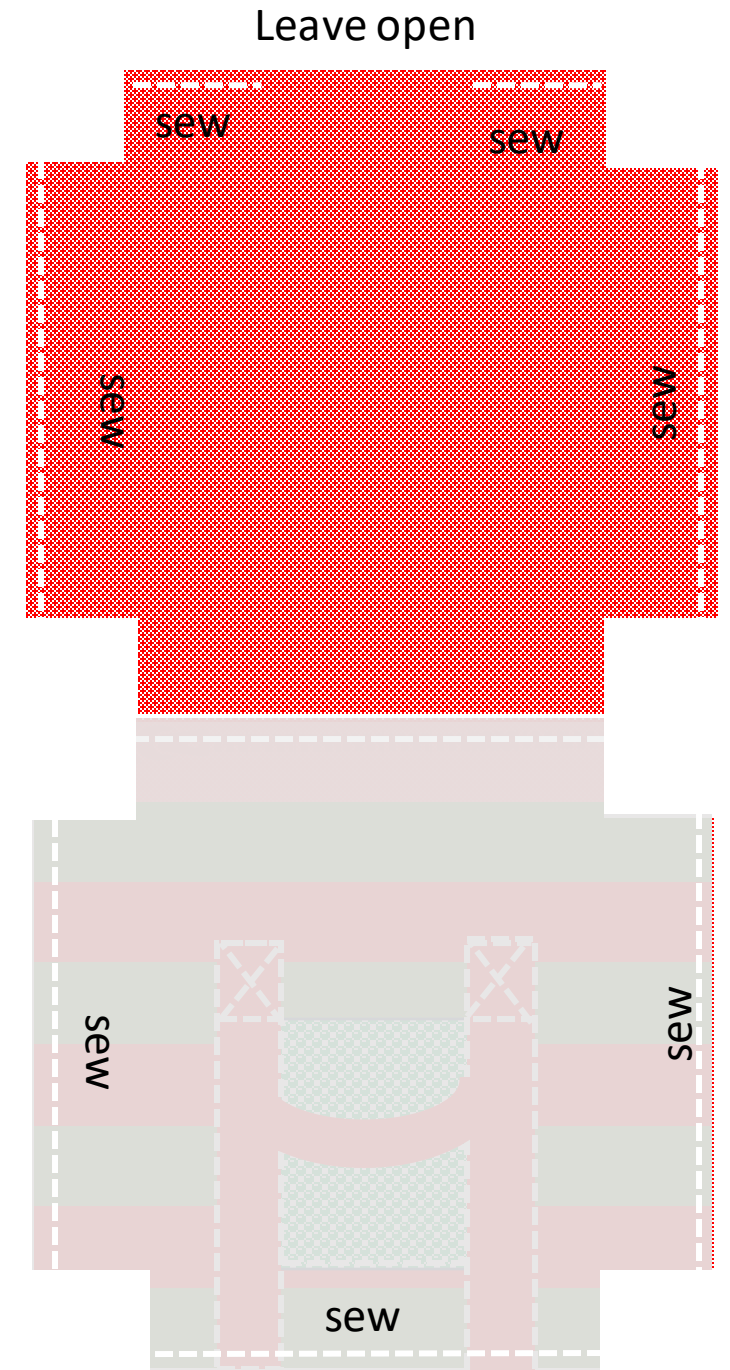


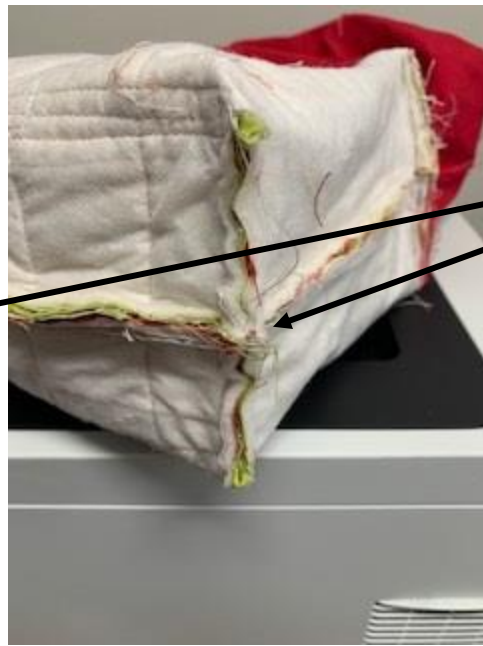


Unzip the zipper halfway and lay the right sides together for the outer section and the right sides together for the lining to look like the picture below.



© Grace Company 2023





Now sew our open corners closed. Pin so that your seam aligns and matches in the center and sew across all four corners.





Pull the right side out and stitch the lining opening closed. Congratulations you now have completed the Santa Satchel!

