
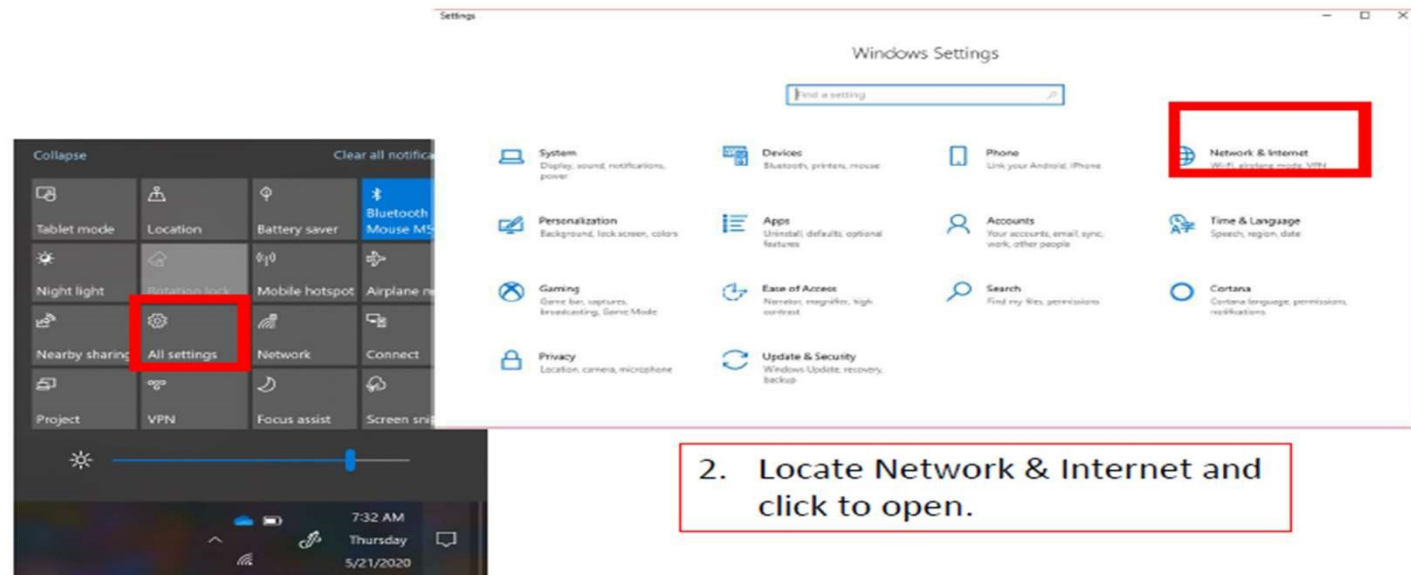


Installation of Quilter's Creative Touch for Online Updates

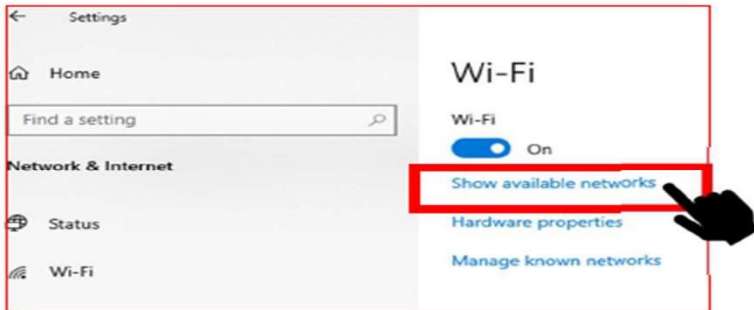
Updating to a new version of the software you will need to be connected to the internet.
Remove the USB cable from your tablet and open QCT in simulation mode.

1. To connect to the internet, swipe in from the right on your tablet, and a screen will pop up. Click on "EXPAND" if you don't see "All Settings"  click on it to find your Wi-Fi and network options.



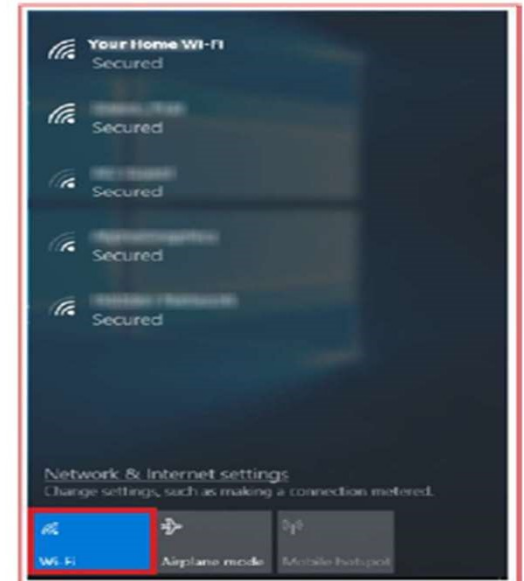
2. Locate Network & Internet and click to open.

Installation of Quilter's Creative Touch for Online Updates



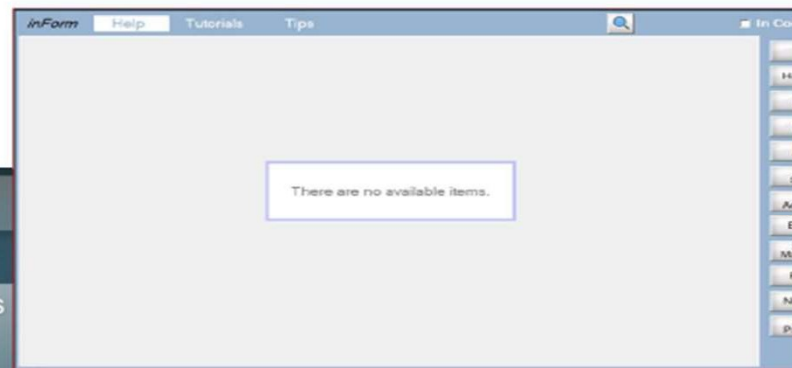
3. Make sure your Wi-Fi is on, if it is grayed out then click to turn on. Locate and click on "Show available networks."

4. A list of available Wi-Fi networks will pop open. Find your local Wi-Fi network connection and click on it. If you have never connected to this network, it will prompt you for your Wi-Fi password, enter your password and click on "CONNECT."

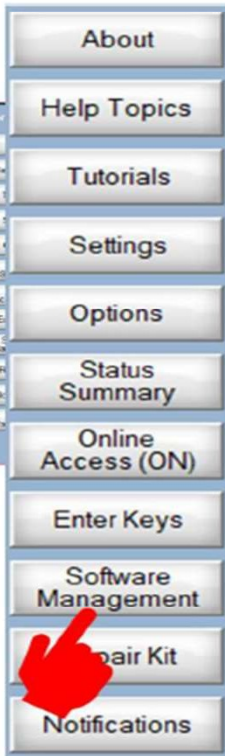


Installation of Quilter's Creative Touch for Online Updates

5. Open your Quilter's Creative Touch program. From the home page select "HELP."

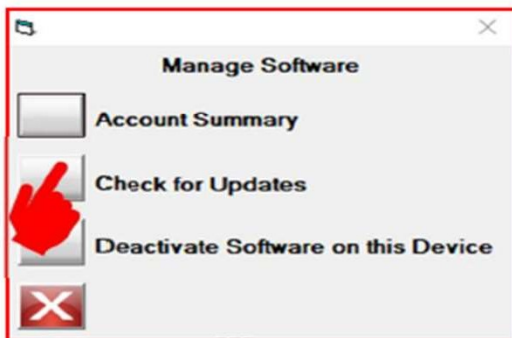


6. Find and click on "Software Management"

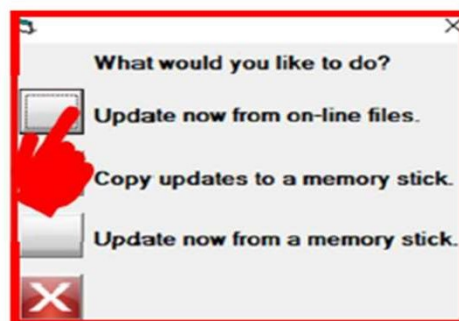


Installation of Quilter's Creative Touch for Online Updates

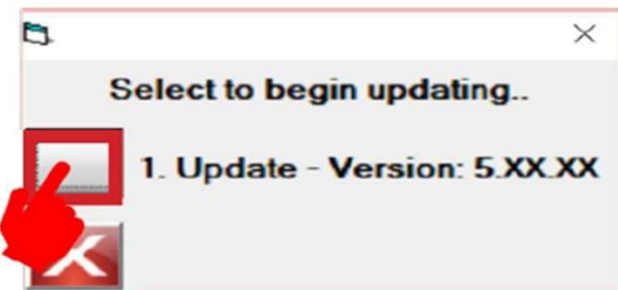
5. From the "Manage Software" click on "Check for Updates."



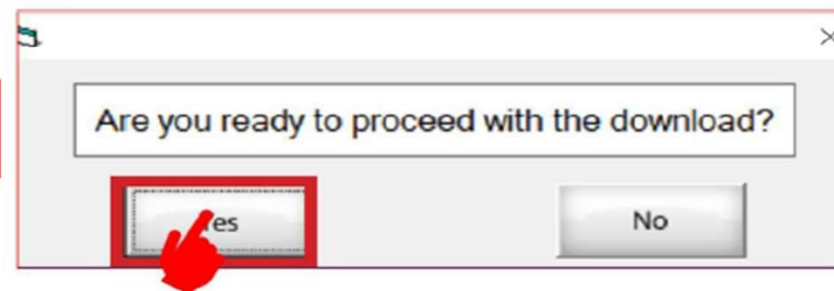
6. "What would you like to do? Window, choose "Update now from on-line files."



7. Select to begin updating... click 1. Update -Version 5.XX.XX.

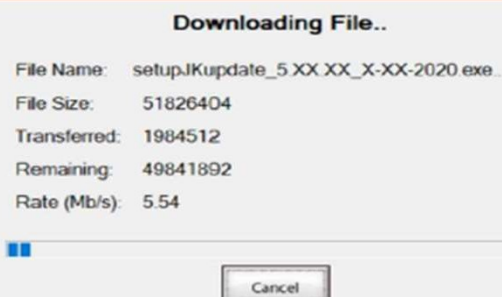


8. Click on "YES" you are ready to proceed with the download.

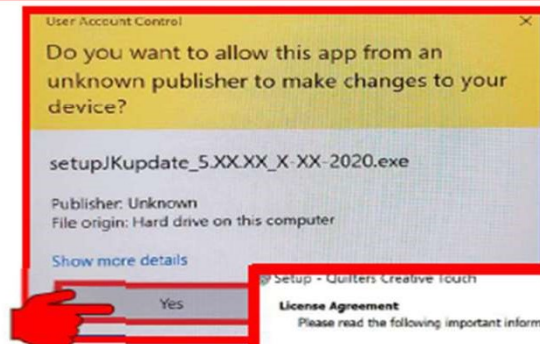


Installation of Quilter's Creative Touch for Online Updates

9. The "Downloading File" window will automatically close once the file has completed downloading.



10. User Account Control will now prompt you "Do you want to allow this app from an unknown publisher to make changes to your device?" Click "YES!"



11. The "Welcome to the Quilters Creative Touch Setup Wizard" pops up click on "Next."

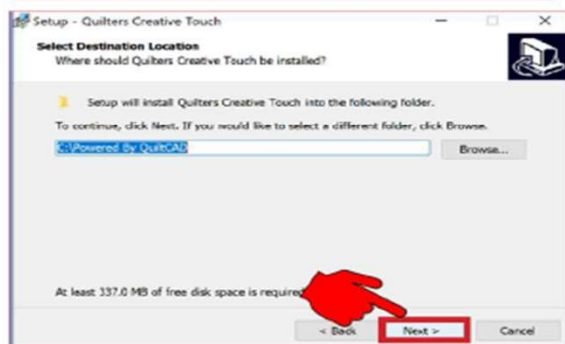


12. The "Quilters Creative Touch License Agreement, window pops up Click "I Accept and then click on "Next."

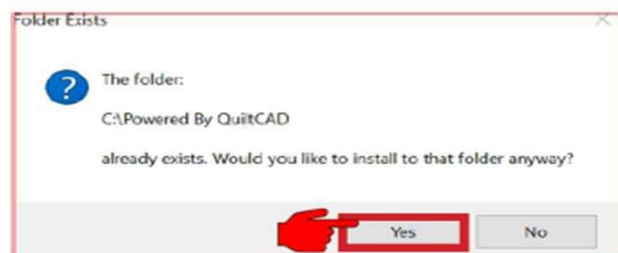


Installation of Quilter's Creative Touch for Online Updates

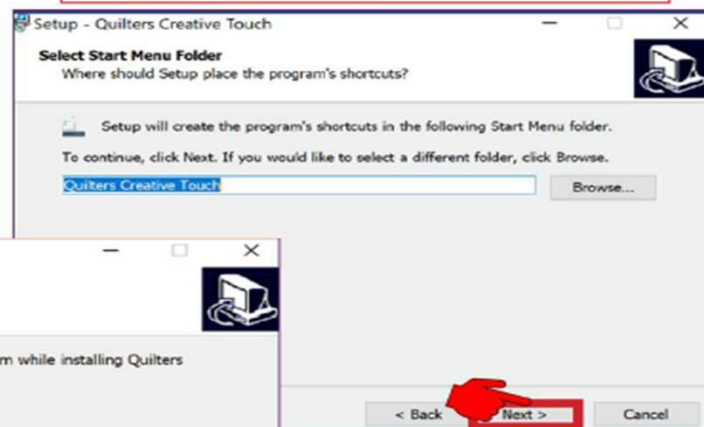
13. The Select Destination Location window opens
DO NOT CHANGE THE DEFAULT DESTINATION LOCATION. Click "next!"



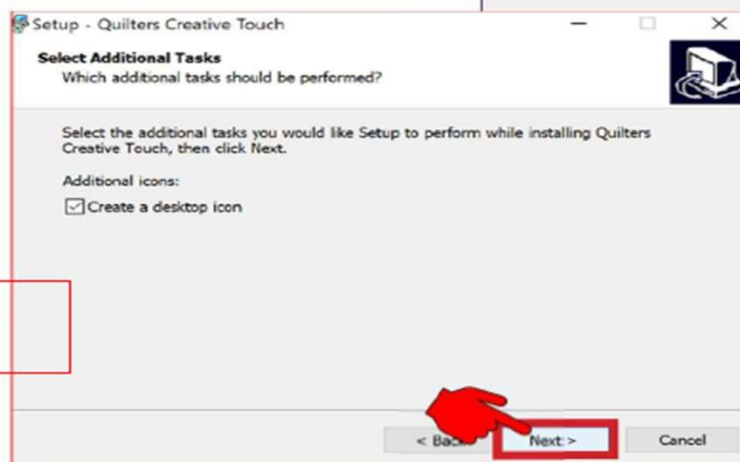
14. Folder Exist window, click "YES!"



15. Select Start Menu Folder, choose "NEXT."



16. Select Additional Tasks window, click "NEXT."

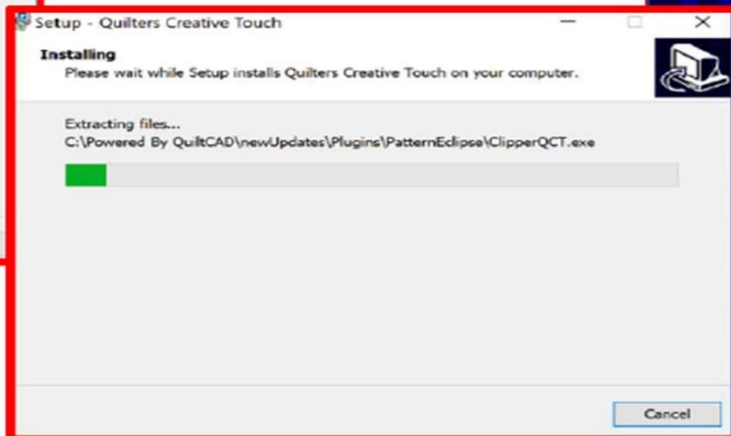
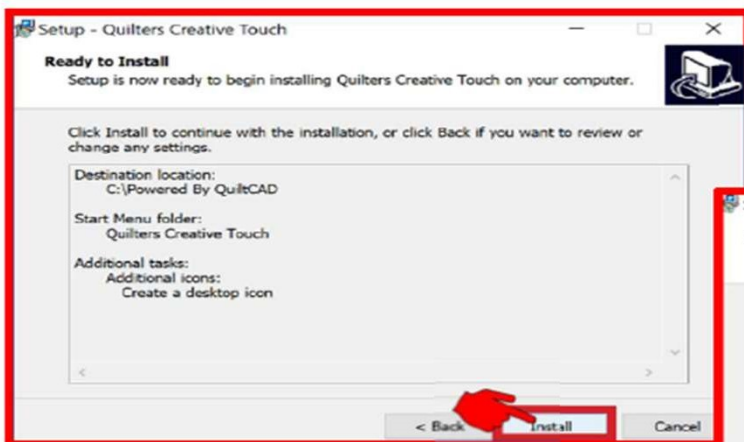


Installation of Quilter's Creative Touch for Online Updates

17. Ready to Install click on "INSTALL."

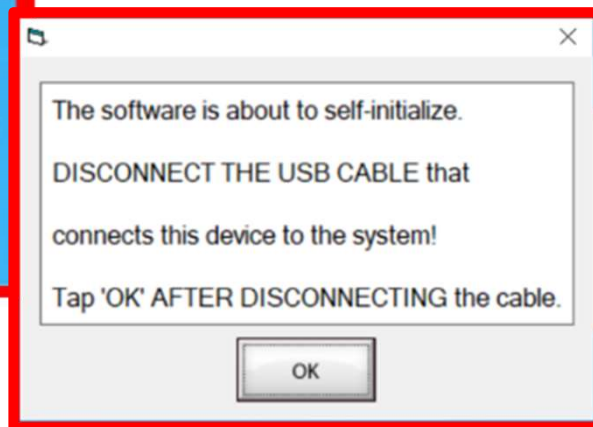
19. On completion of the Quilters Creative Touch setup click on "FINISH."

18. The Installing window will automatically close when install is completed.



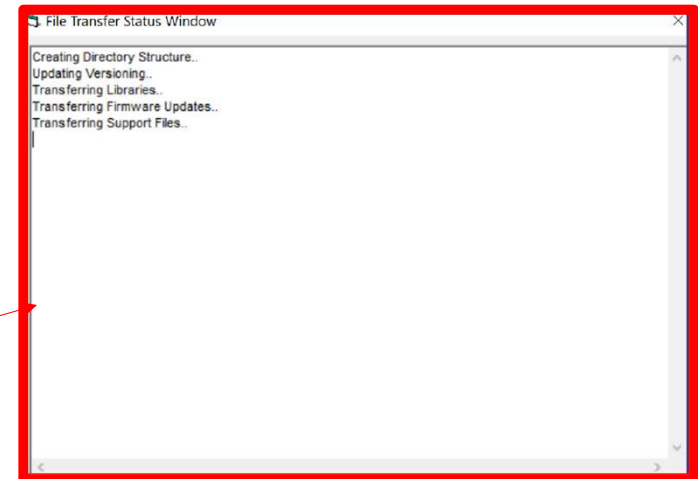
Installation of Quilter's Creative Touch for Online Updates

20. The Quilter's Creative Touch ICON will appear on your tablet screen or desktop screen "Double Click" on the ICON and the installation of the files and directories will complete.



Warning: If you have not disconnected your USB cable do so NOW!!!!

Now your files can complete their downloading.



Installation of Quilter's Creative Touch for Online Updates

21. The USB Driver Load will pop up telling you that your Drivers must be loaded. Click on "LOAD DRIVERS."

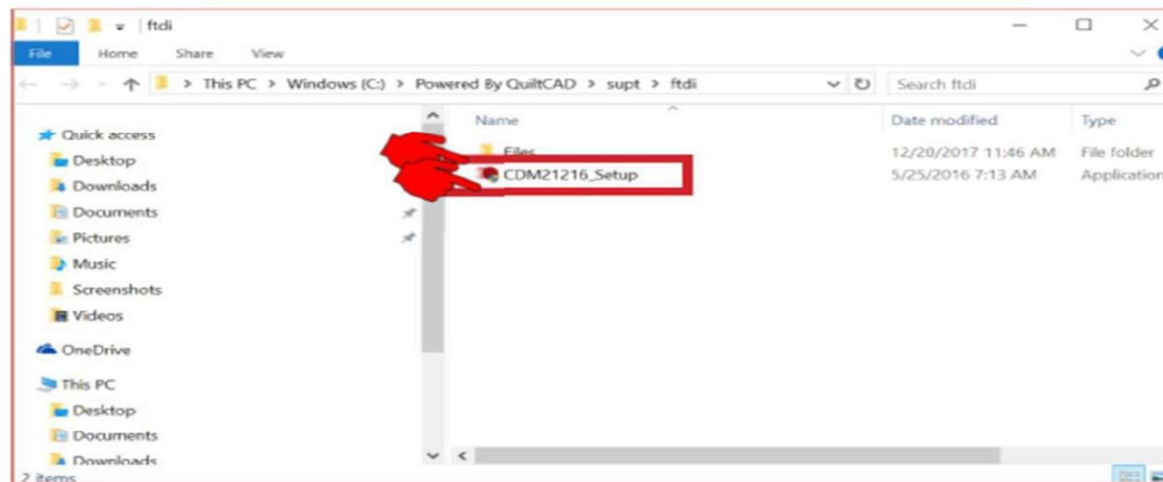
The USB drivers must be loaded to control the hardware.
(This is a one-time process only)

1. Click on the 'Load Drivers' button to start the load process.
2. File Explorer will pop-up.
Double click on: 'CDM21216_Setup.exe'
to launch the Driver Loader.
4. Follow the Driver Loader prompts to completion.
3. CLOSE FILE EXPLORER!
5. Click 'OK' to complete the process.

The program will then be stopped and re-started.

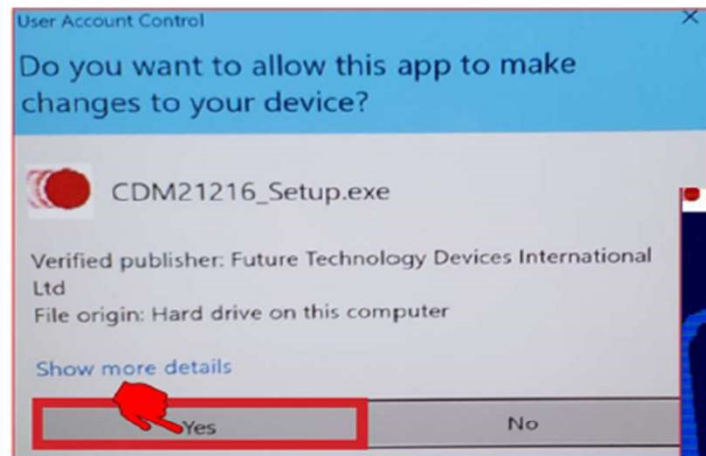


22. Double click on the CDM21216_Setup file.



Installation of Quilter's Creative Touch for Online Updates

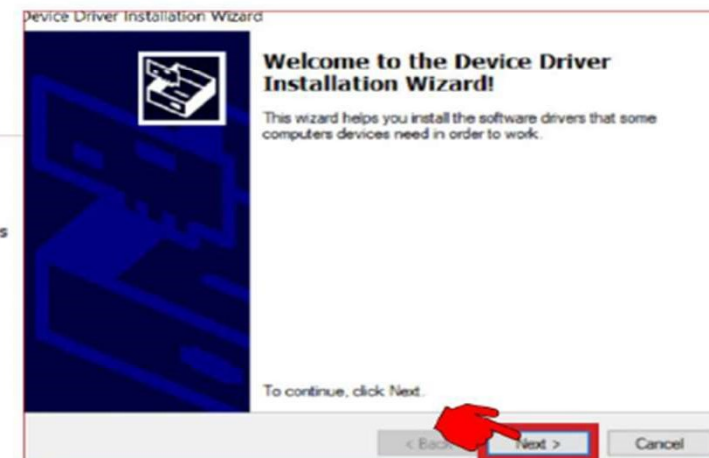
23. The User Account Control will now prompt you "Do you want to allow this app to make changes to your device?" Click on "YES!"



24. Click on "EXTRACT" when the FTDI CDM DRIVERS prompts you.

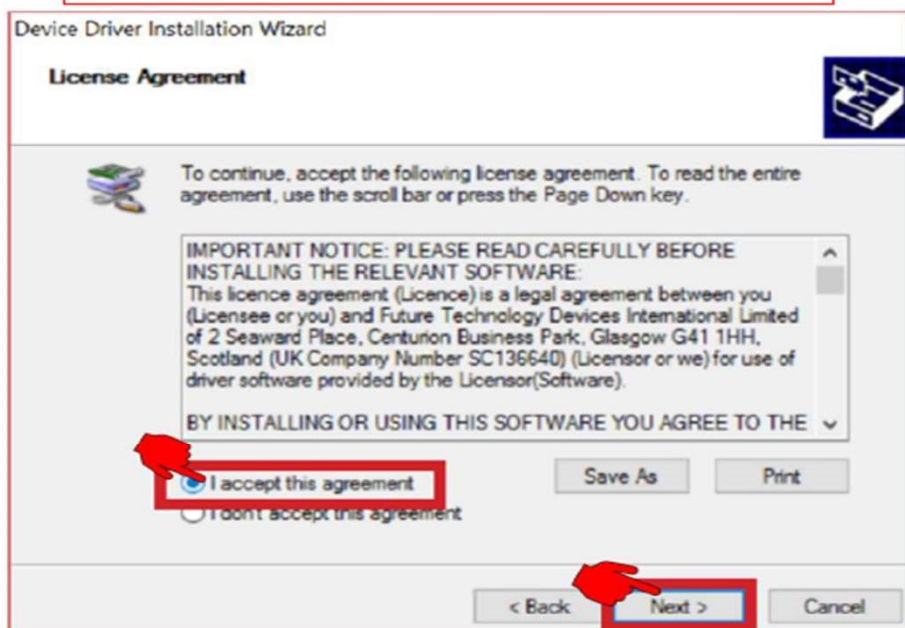


25. When you see Welcome to the Device Driver Installation Wizard! Click on "NEXT."

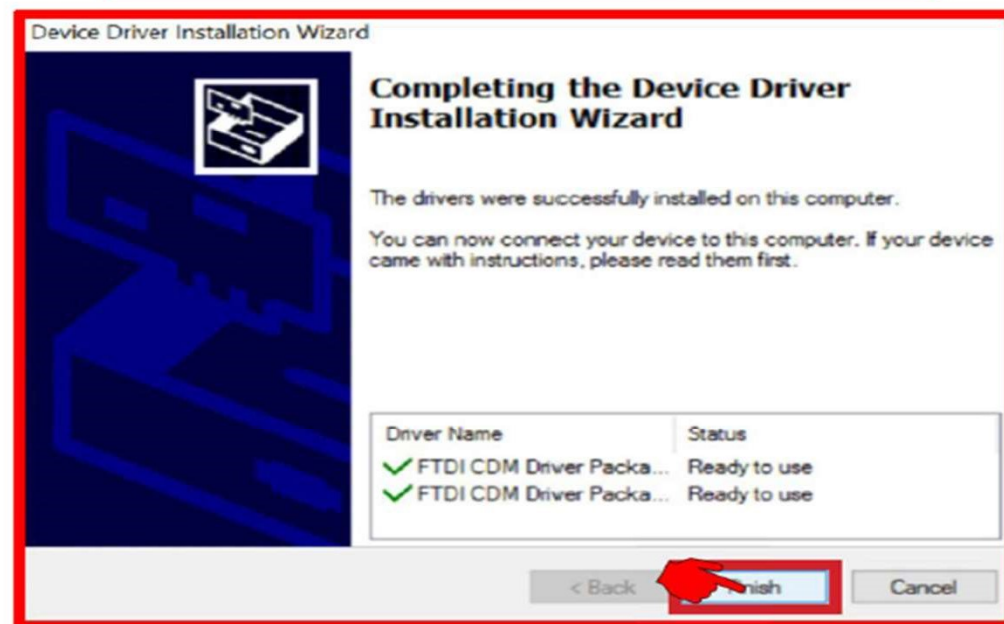


Installation of Quilter's Creative Touch for Online Updates

26. When the License Agreement pops up Choose, "I Accept this agreement," then click on "NEXT."

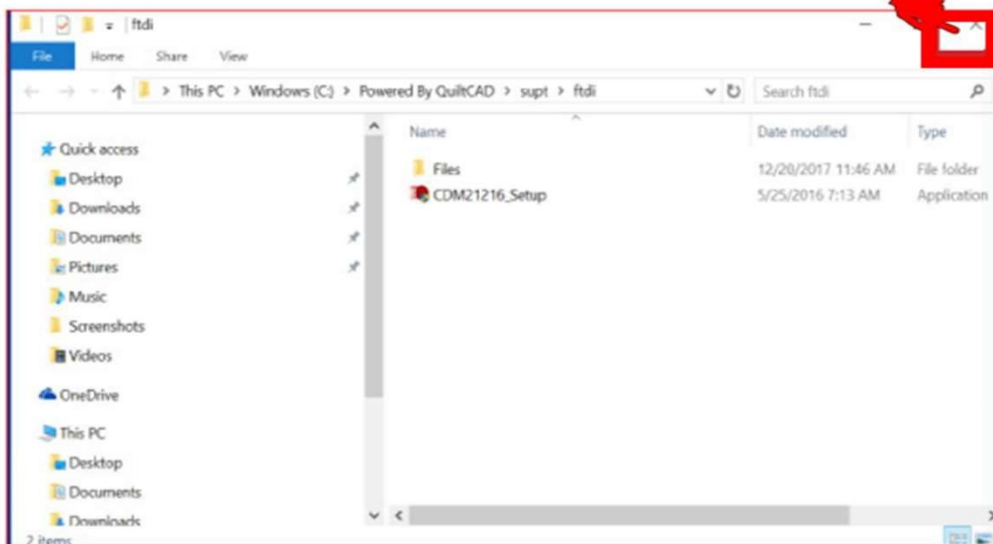


27. When you see Completing the Device Driver Installation Wizard, click on "FINISH!"

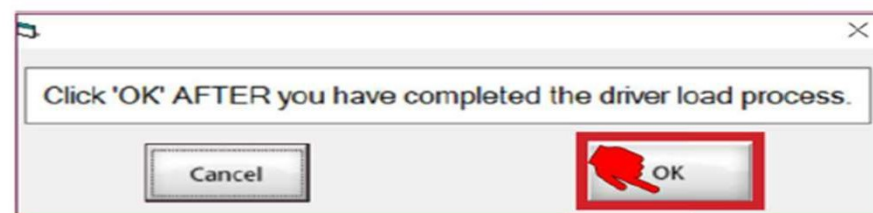


Installation of Quilter's Creative Touch for Online Updates

28. Click the "X" in the upper righthand corner of the File Explorer window to close it.



29. Click "OK" and now Plug in the QCT USB cable back into your tablet.

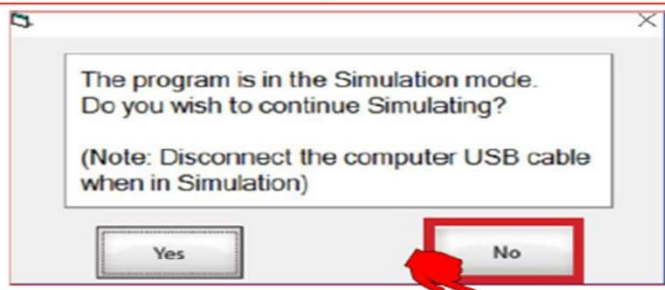


30. Turn the power "ON" for your QuiltMotion if it is not on, at the back of the carriage and click on "OK" to re-start program.

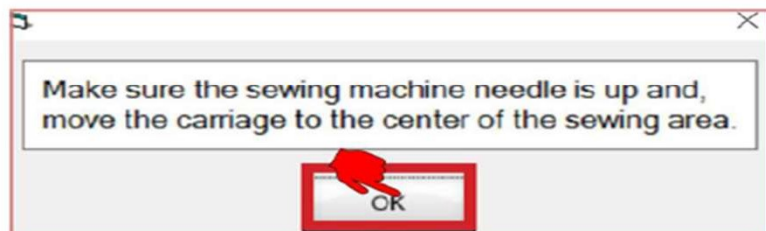


Installation of Quilter's Creative Touch for Online Updates

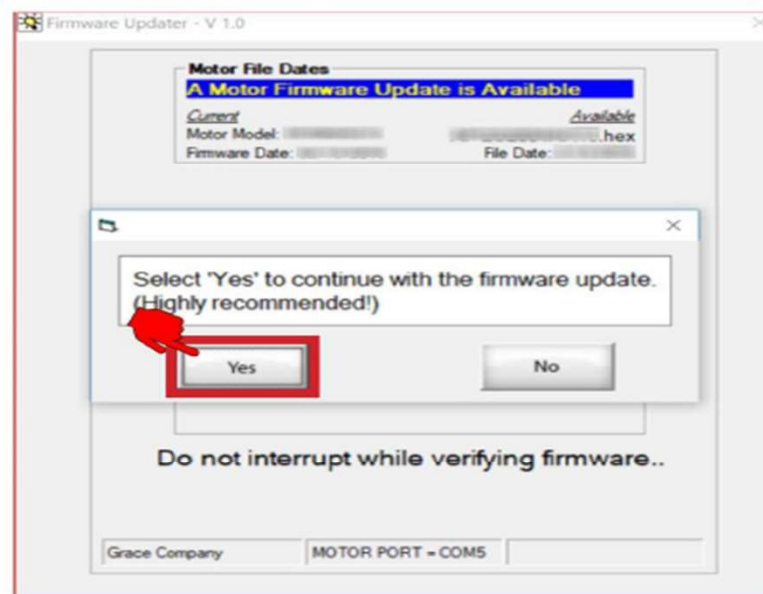
31. You will be prompted to continue in Simulation Mode, Click "NO."



32. Another prompt will pop up asking you to make sure the needle is up on your sewing machine because you will need to move your machine to the center of your frame. After you have done this click "OK."

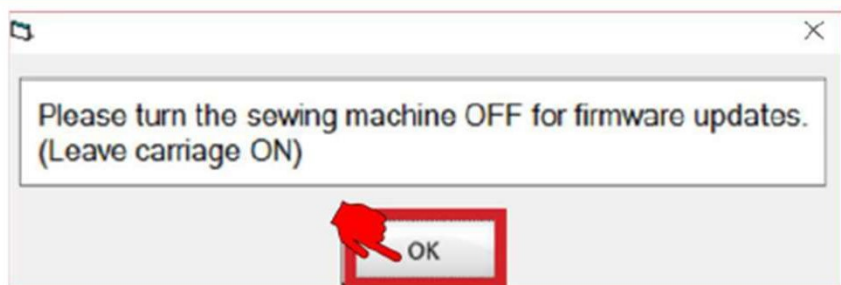


33. Now you are ready to do a Firmware Update. Choose "YES" to continue with the firmware update.

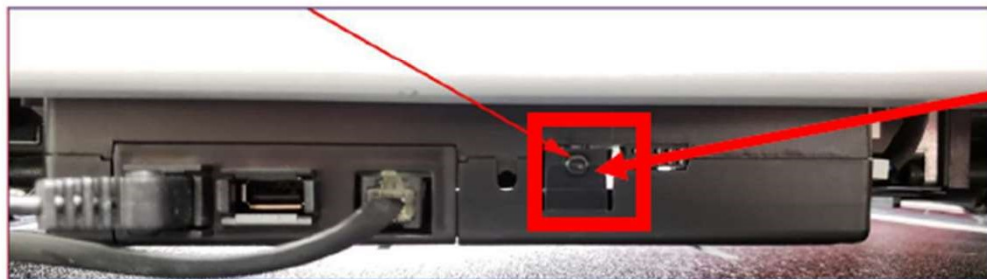


Installation of Quilter's Creative Touch for Online Updates

34. Now you will be prompted to turn the sewing machine "OFF," just the sewing machine not the QuiltMotion. Once you have turned off just the sewing machine click "OK" to continue the firmware update.



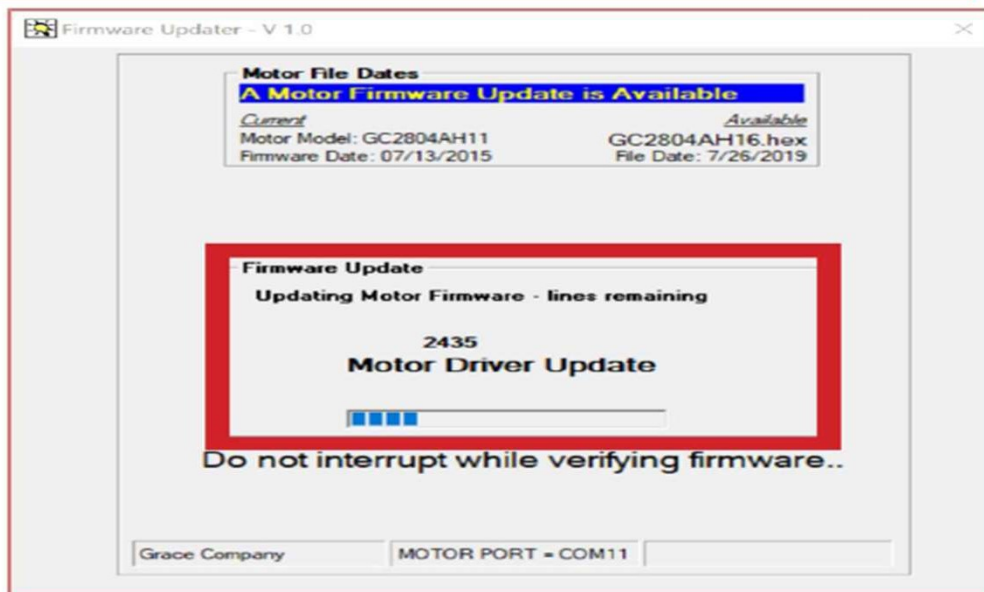
35. The "Firmware Load Button Push" window will appear. Push in the firmware button located on the bottom carriage under your sewing machine. Push the button two times, you will have 20 seconds to push it twice. Then click "OK" on your tablet screen.



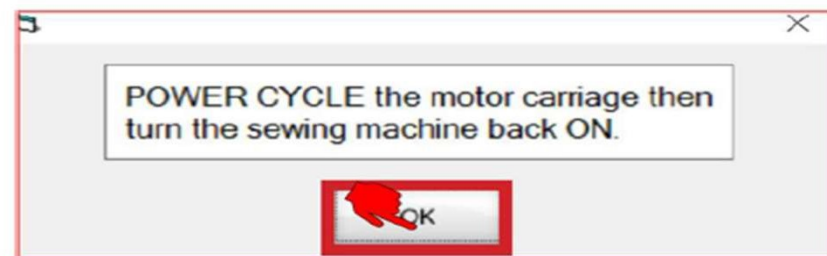
This is how the QuiltMotion will look under your carriage. See the button just to the right of the sewing machine cable.

Installation of Quilter's Creative Touch for Online Updates

36. When you see these numbers counting down showing the lines, move away from the frame while this process runs, "DO NOT TOUCH THE FRAME, CARRIAGE OR TABLET, while it is completing this update.



37. Now you can POWER CYCLE the motor carriage. Turn off the QuiltMotion by using the power strip switch attached to the back of the carriage. Please wait 30 seconds and then turn the power back on to the QuiltMotion and click "OK" and now turn your sewing machine back on.



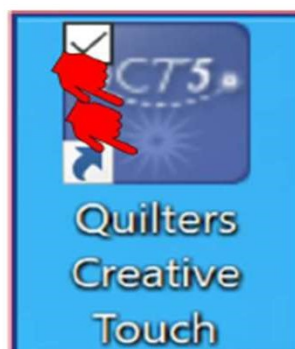
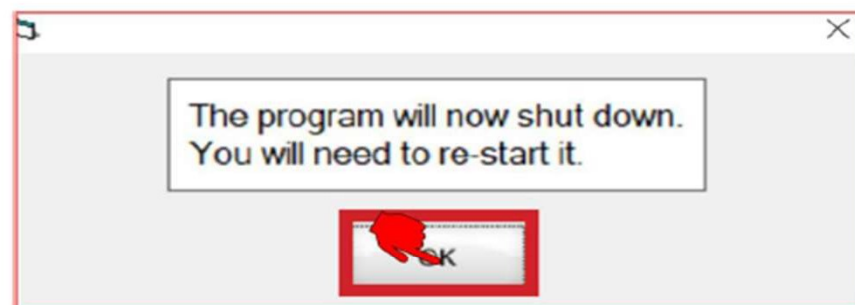
*NOTE: Power cycle you will see and hear the carriage move just a bit.

Installation of Quilter's Creative Touch for Online Updates

39. Now that you have completed power cycling the carriage, click "YES!"



40. "The program will now shut down" will appear you will need to re-start, click "OK."



41. Double click on the shortcut icon on your tablet screen to open "Quilters Creative Touch."