

# Strip Quilted Jacket Panel



By K.Keisker



Find a jacket to repurpose.



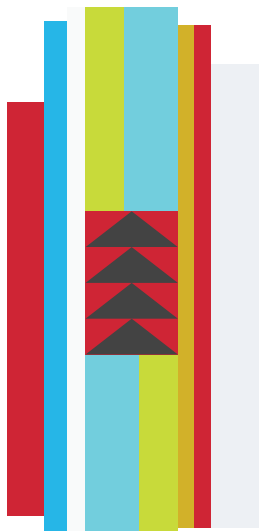
I chose to cut out the back pannel of the jacket to give the whoe look a “stained glass” vibe.



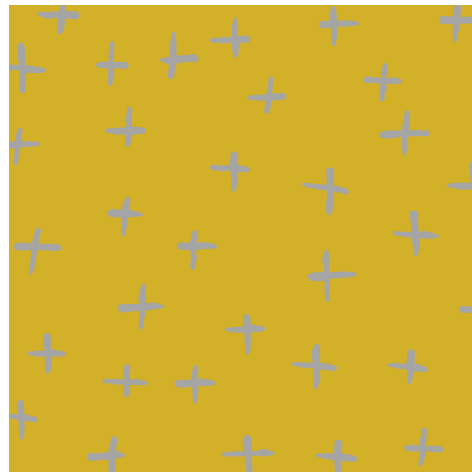
You don't have to do this meathod - you can simply sew your peiced top directly onto the jacket.



Going through all the scrap fabric that I had, I chose this color combination. I also found a book of flying geese that I wanted to add for interest!



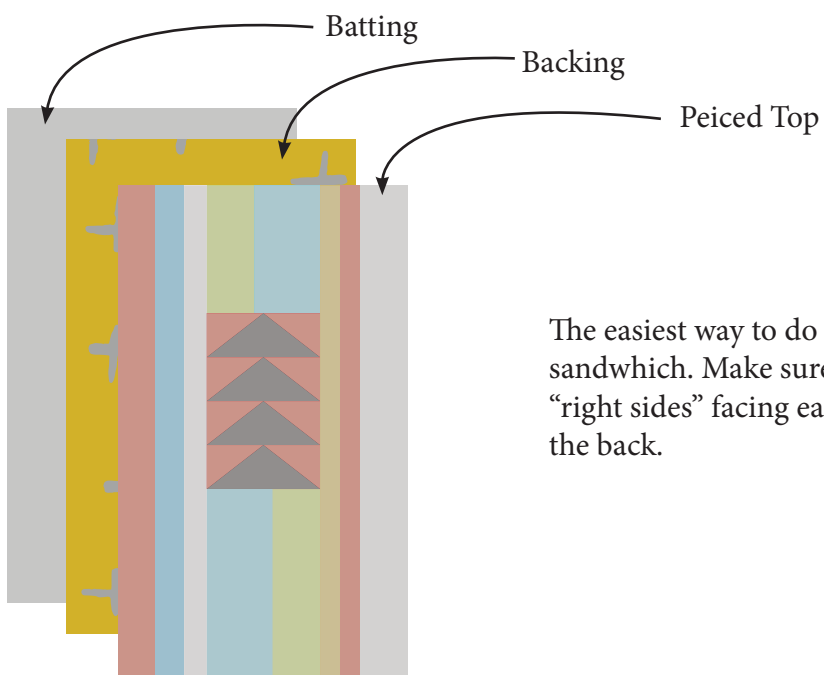
Pieced Top



Backing

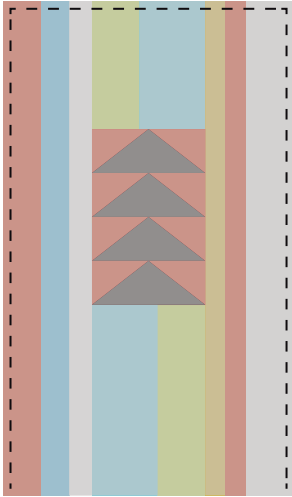


Batting

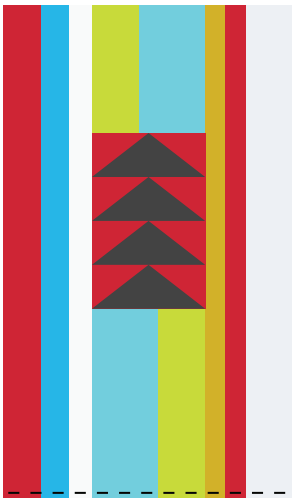


The easiest way to do this step is to make a sandwich. Make sure your top and backing have "right sides" facing each other. Add the batting on the back.





Sew them together on three sides



Flip it inside out so now the “right sides” are facing out and the batting is on the inside. Sew the bottom - either blind stitch or with your machine.



Line up your panel from the outside and pin it in place



You can use a blind stitch to stitch the quilted piece into place.







Add more visual intrerst! Put it on a frame and do  
some free motion quilting on it!

