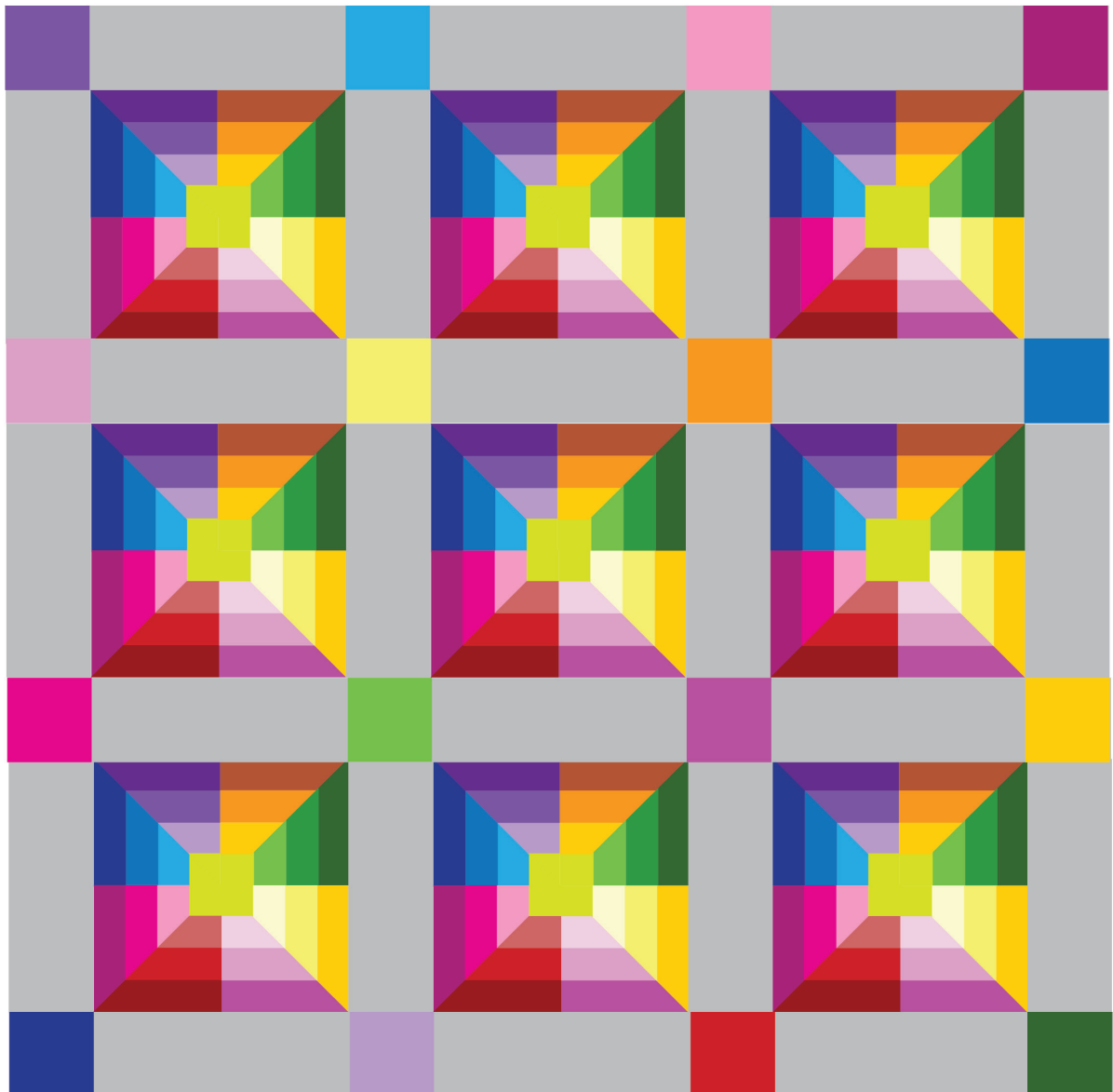




Sew Easy Quilt



Materials

- Gray Fabric: 2 yards
- Center Block Color (Chartreuse): 2 yards
- Borders: 2.25 yards
- Backing: 2.5 yards 108" -wide solid

0.5 yard of each color:

- Dark Red
- Medium Red
- Light Red
- Dark Green
- Medium Green
- Light Green
- Dark Purple
- Medium Purple
- Light Purple
- Dark Pink
- Medium Pink
- Light Pink
- Dark Yellow
- Medium Yellow
- Light Yellow
- Dark Mauve
- Medium Mauve
- Light Mauve
- Dark Blue
- Medium Blue
- Light Blue
- Dark Orange
- Medium Orange
- Light Orange

Cutting Instructions

Cut three strips of each color, 2.5" x width of fabric (WOF)

Cut 24 strips of chartreuse, 2.5" x WOF



Sew three of each of the color groups together using 1/4" seam allowance

*Make sure you sew the chartreuse next to the lightest colored strip, as shown above.

This group of colors will be your left angle cuts.

Cut nine triangles of each:

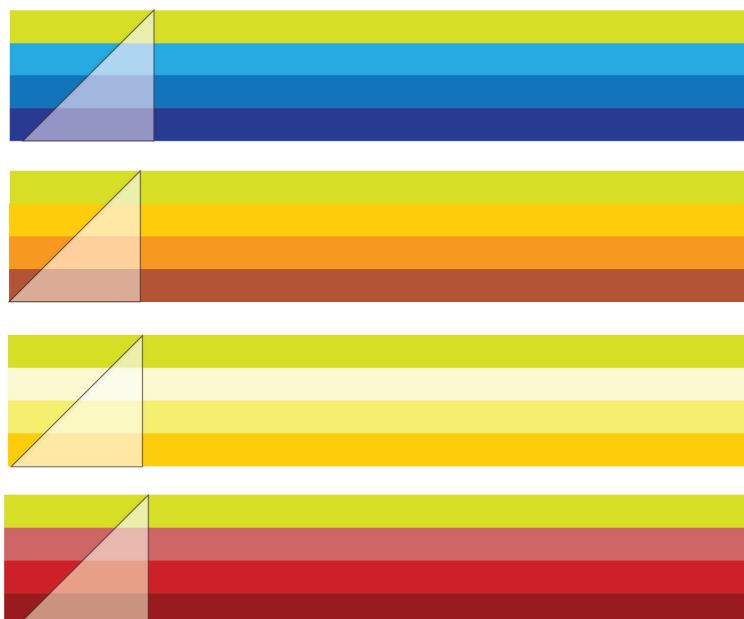
Purple, Green, Mauve, Pink



This group of colors will be your right angle cuts

Cut nine triangles of each:

Blue, Orange, Yellow, Red



Cut triangles from each color group for a total of 36
left cut triangles and 36 right cut triangles.



Separate into color group
combinations:



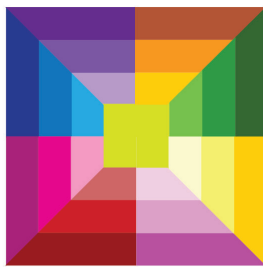
Sew one left to one right to
make your 8" block. You will
need four of each to make
your kaleidoscope.



Sew two of your 8" blocks together to make the top and bottom sections of your kaleidoscope.

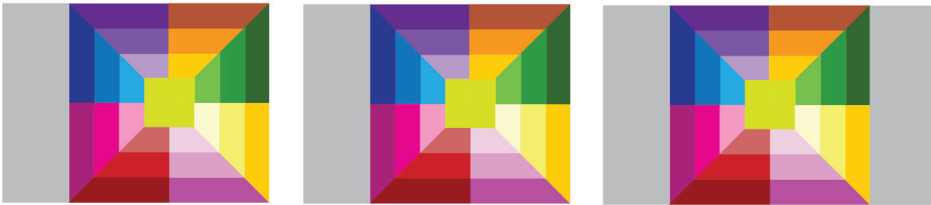
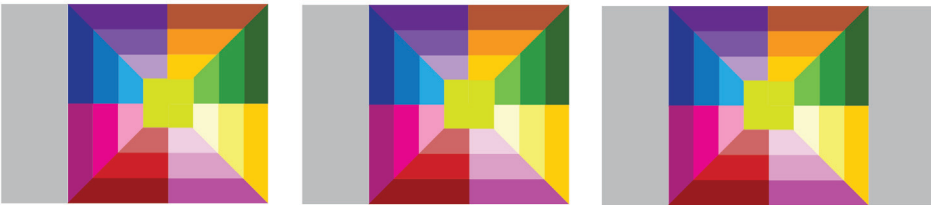


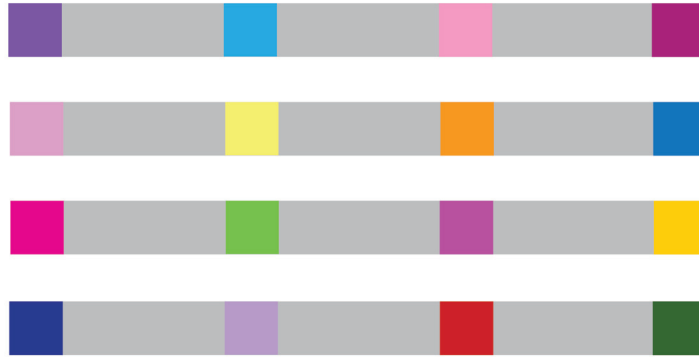
Sew one top to one bottom to make nine complete kaleidoscope blocks



Cut twenty-four 4.5" x 8.5" grey strips for the sashing

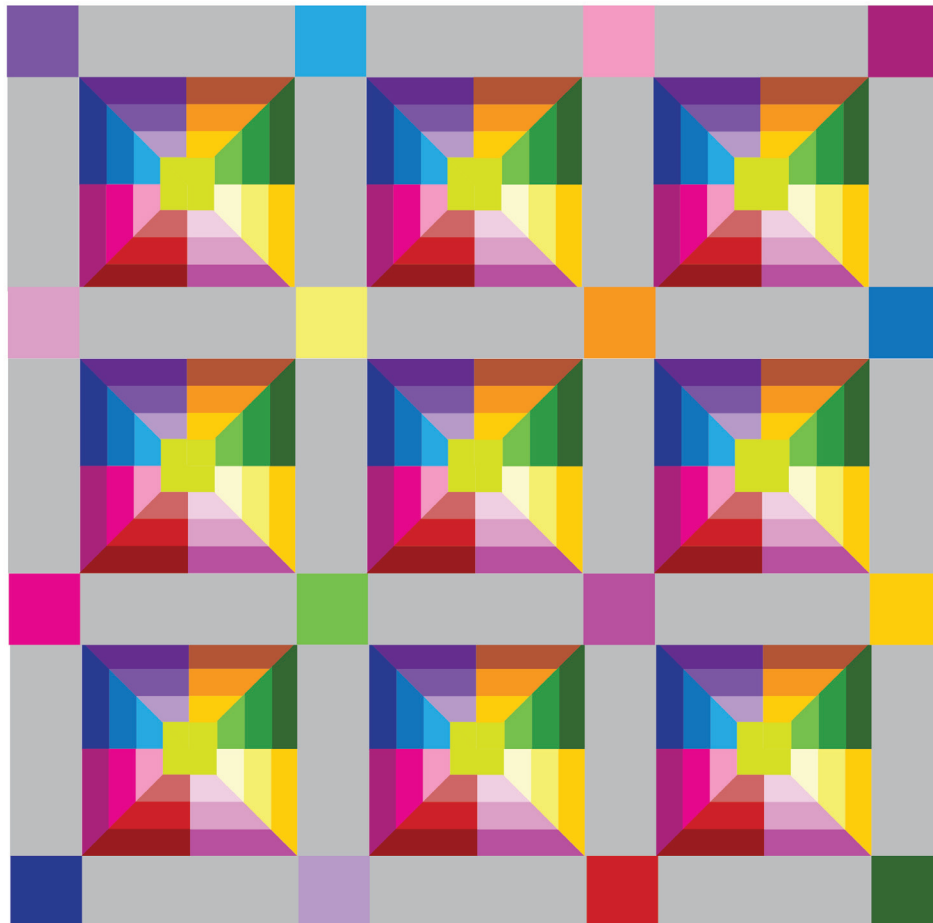
Cut sixteen 4.5"x4.5" bright color blocks





Sew off your bright colored squares to three of the 4.5" x 8.5" gray sashing strips to make your horizontal sashing strips.

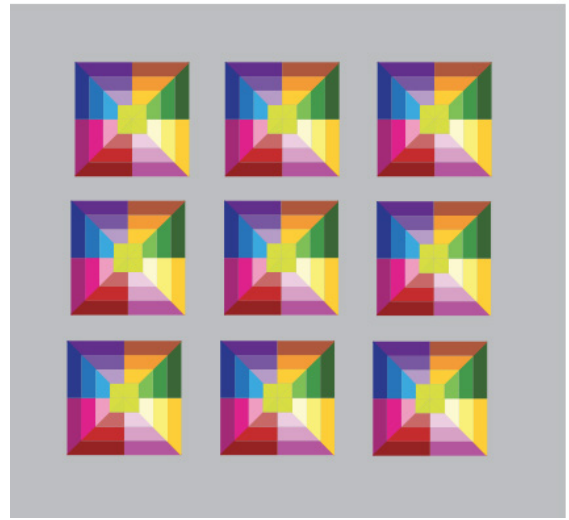
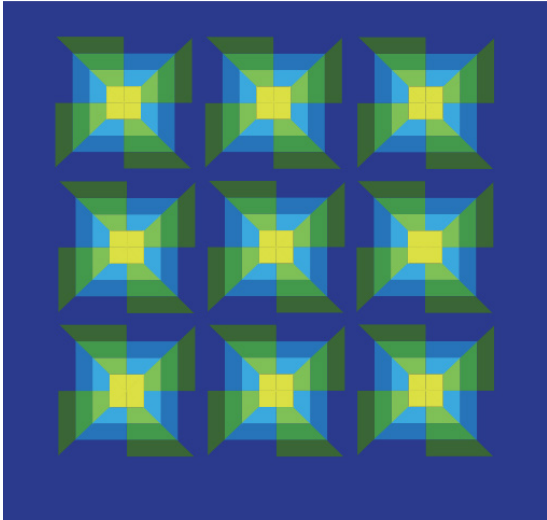
Make 4 total Horizontal sashing strips and sew them all together!



Now you are ready to quilt.

Looks hard but it is:
SEW EASY!

additional color variations



Contact us!

Phone: (800) 264-0644

Email: education@graceframe.com

Web: www.graceframe.com



©The Grace Company
2225 South 3200 West
Salt Lake City, UT
84119 United States